

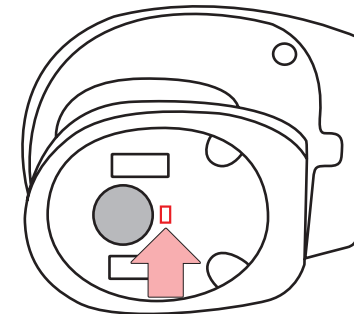


The Unitech MS840P Wireless Scanner and Cradle

SETUP AND INSTALLATION

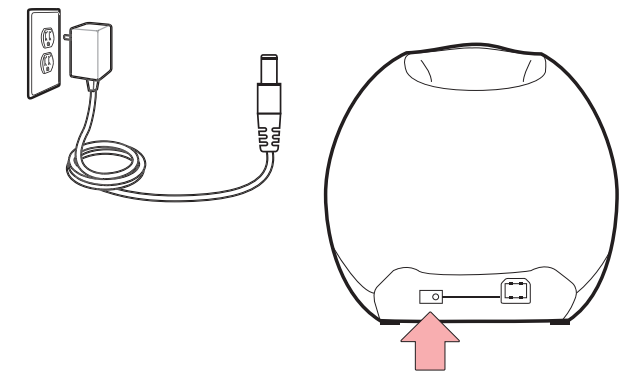
The following steps will walk you through the installation process.

STEP 1: POWER ON



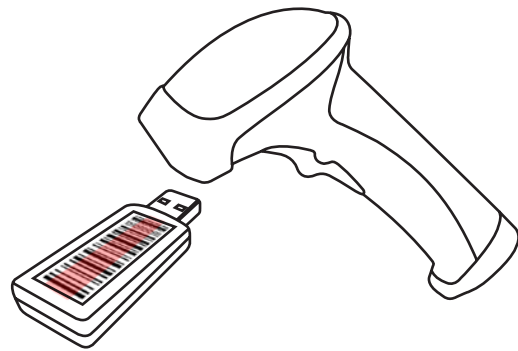
Switch the power button to the on position.

STEP 2: CHARGE



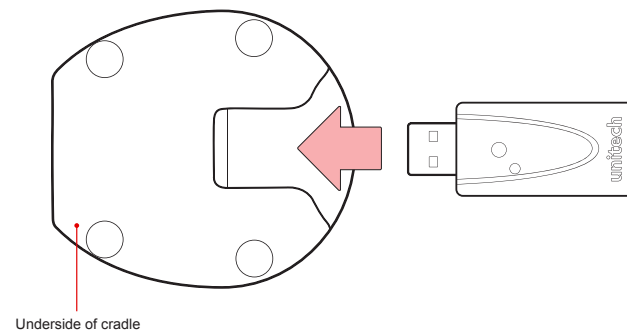
Plug the power supply cable into the bottom of the MS840P and into an electrical outlet. Charge for at least 5 hours.

STEP 3: SCAN DONGLE



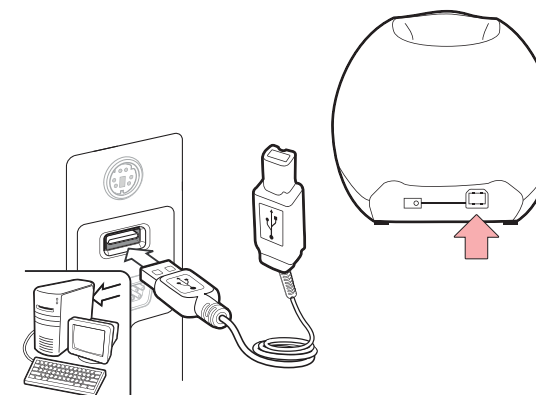
Scan the barcode on the USB Dongle.

STEP 4: CONNECT DONGLE



Connect the USB Dongle to the port in the cradle.

STEP 5: CONNECT CRADLE TO HOST



Plug the cradle into a free USB port on a host computer and into the MS840P using the cable provided. The MS840P is now ready to use.

TEST & FINISH

Open a word processing program such as Microsoft Word or Notepad on your host. Now scan the following barcode:



If the word "Unitech" appears on the screen you have successfully installed your scanner. Congratulations!

SETTINGS AND CONFIGURATION

The following section covers the most common configuration settings for your MS840P scanner.

For additional configuration options please visit unitechscanners.com/MS840P and select the "Download" tab. You will find the User's Manual and a variety of other resources.

FLASH MODE



Flash Mode

Scan here to switch to Flash Mode from the default Trigger Mode. In Flash mode, the MS840P will function automatically. It will scan at a set interval.

TRIGGER MODE



Trigger Mode

Scan here to switch back to Trigger Mode. In Trigger Mode, the MS840P will scan only when the scanner button is pressed.

TAB MODE



Tab Mode



You may wish to set your scanner to Tab Mode. In this mode, data will tab over to the next column as you scan instead of jumping to the next line. Scan the top barcode then the bottom barcode to switch to Tab Mode from the default Enter Mode.

ENTER MODE



Enter Mode

Scan here to switch back to Enter Mode.

GOOD READ / BAD READ



HOW CAN WE HELP YOU?

The MS840P should be recognized as a generic HID device by your host device, similar to a standard keyboard. This allows you to scan into any field that you could normally type into.

Unitech's professional support team is available to quickly answer questions or technical-related issues. Should equipment issues occur, please contact a Unitech Service Representative at (800) 861-8648 for more information.